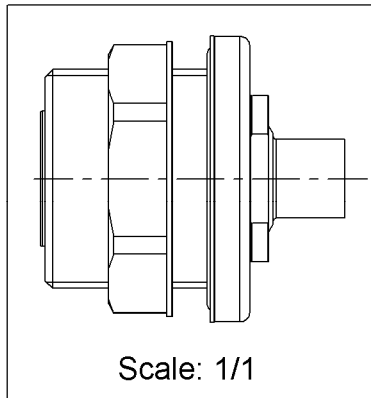
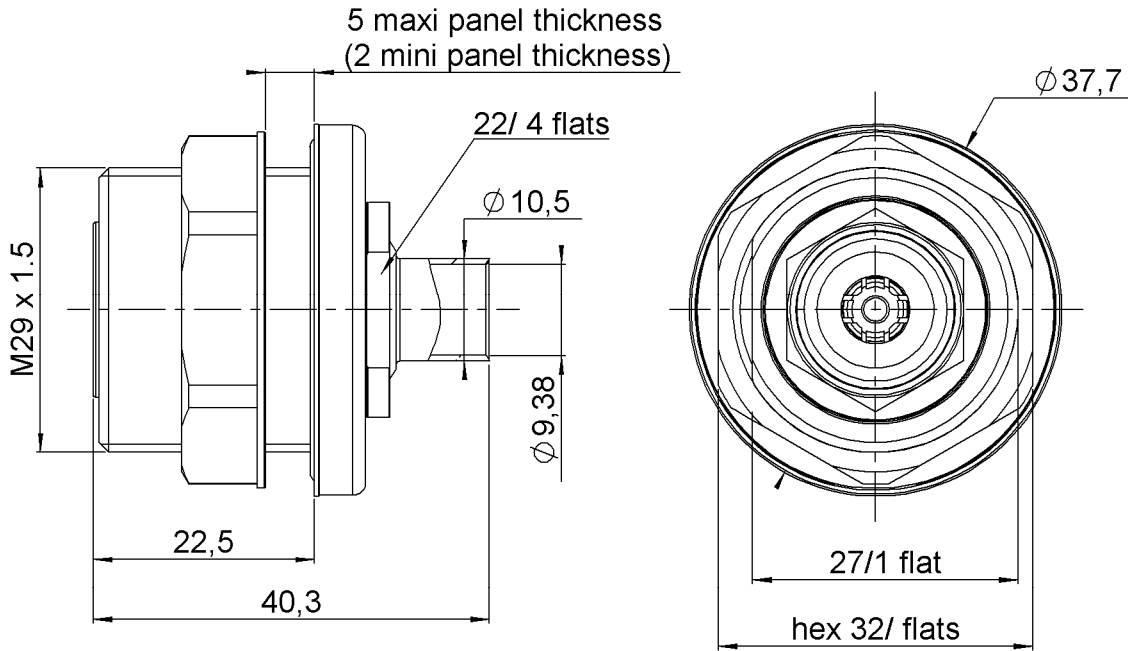


**STRAIGHT BULKHEAD JACK PANNEL SEAL**

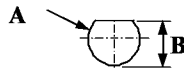
**R187.110.010**

**SOLDER CABLE TYPE 3/8"**

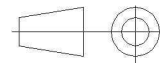
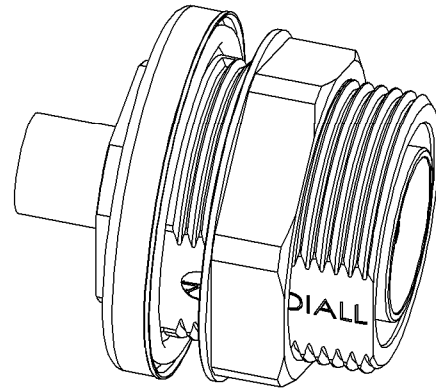
Series : 7/16  
**COMPOSITE**



**PANEL CUT OUT**



	mm	
	Maxi	mini
<b>A</b>	29.4	29.2
<b>B</b>	27.5	27.3



All dimensions are in mm.

COMPONENTS	MATERIALS	PLATING ( $\mu\text{m}$ )
BODY	COMPOSITE MATERIAL - BLACK	-
CENTER CONTACT	BRONZE	SILVER 5 OVER COPPER 0.5
OUTER CONTACT	BRASS	BBR 0.5 OVER SILVER 3
INSULATOR	PTFE	
GASKET	ETHYLENE PROPYLENE	
OTHERS PARTS	BRASS	BBR 0.5 OVER SILVER 3
SOLDER SLEEVE	BRASS	SILVER 5 OVER COPPER 0.5
-	-	-

Issue : 1005 A

In the effort to improve our products, we reserve the right to make changes judged to be necessary.



**STRAIGHT BULKHEAD JACK PANNEL SEAL**

**R187.110.010**

**SOLDER CABLE TYPE 3/8"**

Series : 7/16  
**COMPOSITE**

**PACKAGING**

Standard	Unit	Other
<b>20</b>	<b>'W' option</b>	<b>Contact us</b>

**SPECIFICATION**

**ELECTRICAL CHARACTERISTICS**

Impedance	<b>50</b>	$\Omega$
Frequency	<b>0-7.5</b>	GHz
VSWR	<b>*1.15 + 0,0000</b>	x F(GHz) Maxi
Insertion loss	<b>0.05</b>	$\sqrt{F}$ (GHz) dB Maxi
RF leakage	- ( <b>NA</b> )	- F(GHz) dB Maxi
Voltage rating	<b>1400</b>	Veff Maxi
Dielectric withstanding voltage	<b>2700</b>	Veff mini
Insulation resistance	<b>10000</b>	M $\Omega$ mini

**CABLE ASSEMBLY**

Stripping	a	b	c	d	e	f
mm	13,0	0,00	30,3	0,00	0,00	0,00

Assembly instruction :

Recommended cable(s)  
FSJ2RN-50A - 3/8»  
HCF 3/8» CuH

Characteristics indicated on this data sheet are those that can be achieved with the highest performance cable. Intrinsic limitations of the cable may diminish the performance of the assembly

Cable retention

- pull off **250** N mini
- torque **NA** N.cm

**MECHANICAL CHARACTERISTICS**

Center contact retention		
Axial force – Mating end	<b>200</b>	N mini
Axial force – Opposite end	<b>100</b>	N mini
Torque	<b>NA</b>	N.cm mini

**TOOLING**

Part Number	Description	Hexagon
R282.868.270	ADAPTER SCREWING TOOL	

Recommended torque		
Mating	<b>2000</b>	N.cm
Panel nut	<b>2000</b>	N.cm
Clamp nut	<b>900</b>	N.cm
A/F clamp nut	<b>22,0000</b>	mm

Mating life (with composite)	<b>50</b>	Cycles mini
Mating life (with brass)	<b>100</b>	Cycles mini
Weight	<b>76,7000</b>	g

**OTHER CHARACTERISTICS**

\*V.S.W.R : DC-3GHz  
\*\*PIM3: -110dBm (2 carries of +43dB)  
Crimp the panel nut all the 5 matings

**ENVIRONMENTAL**

Operating temperature	<b>-40+85</b>	$^{\circ}$ C
Hermetic seal		Atm.cm3/s
Panel leakage	<b>IP67</b>	

Issue : 1005 A

In the effort to improve our products, we reserve the right to make changes judged to be necessary.



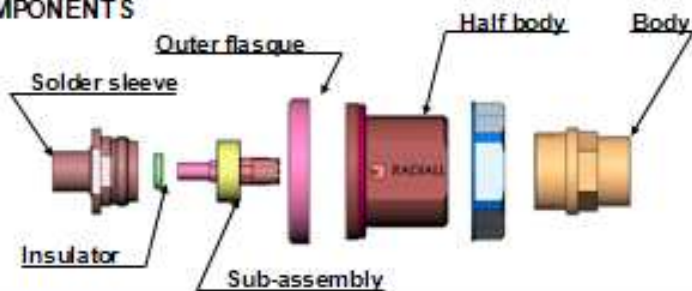
**STRAIGHT BULKHEAD JACK PANNEL SEAL**

**R187.110.010**

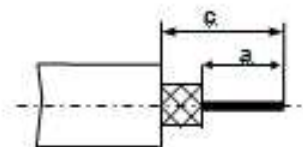
Series : 7/16  
COMPOSITE

**SOLDER CABLE TYPE 3/8"**

**COMPONENTS**



**STRIPPING DIMENSIONS**



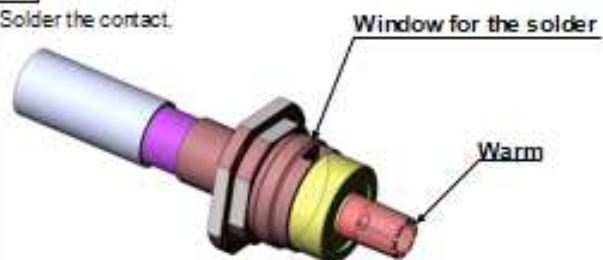
**1**

Strip the cable.



**4**

Solder the contact.



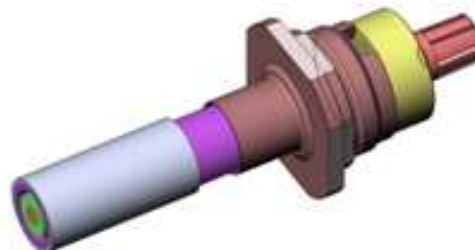
**2**

Slide the insulator over the inner conductor until it bottoms against cable dielectric.



**5**

Solder the braid.



**3**

Slide the sub assembly (center contact+insulator) on until it bottoms against the front of solder sleeve.



**6**

Mount the flasque, the outer body and screw the body into the rear connector with the tool (see connector TDS). Recommended coupling torque (see connector TDS).



Issue : 1005 A

In the effort to improve our products, we reserve the right to make changes judged to be necessary.